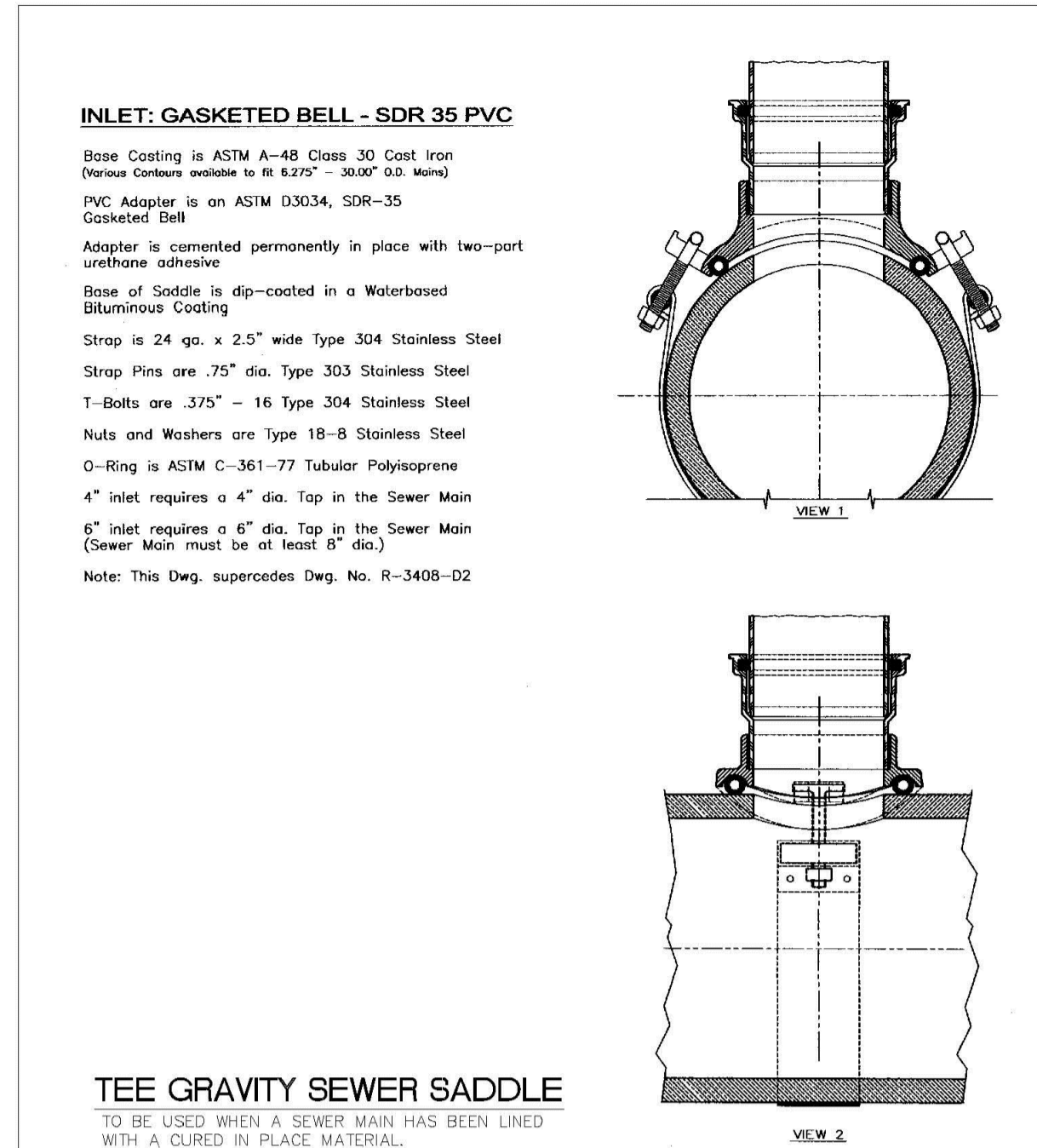
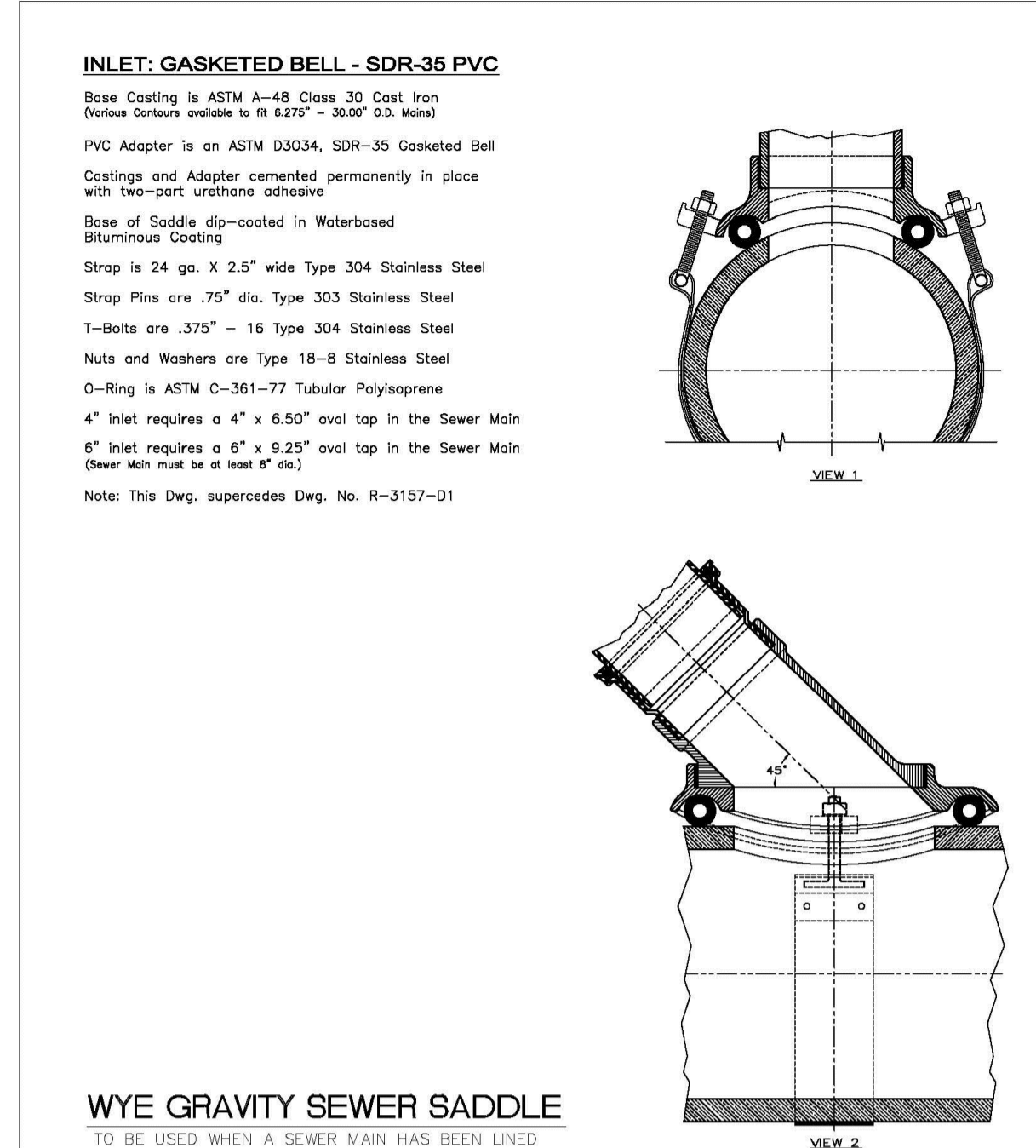


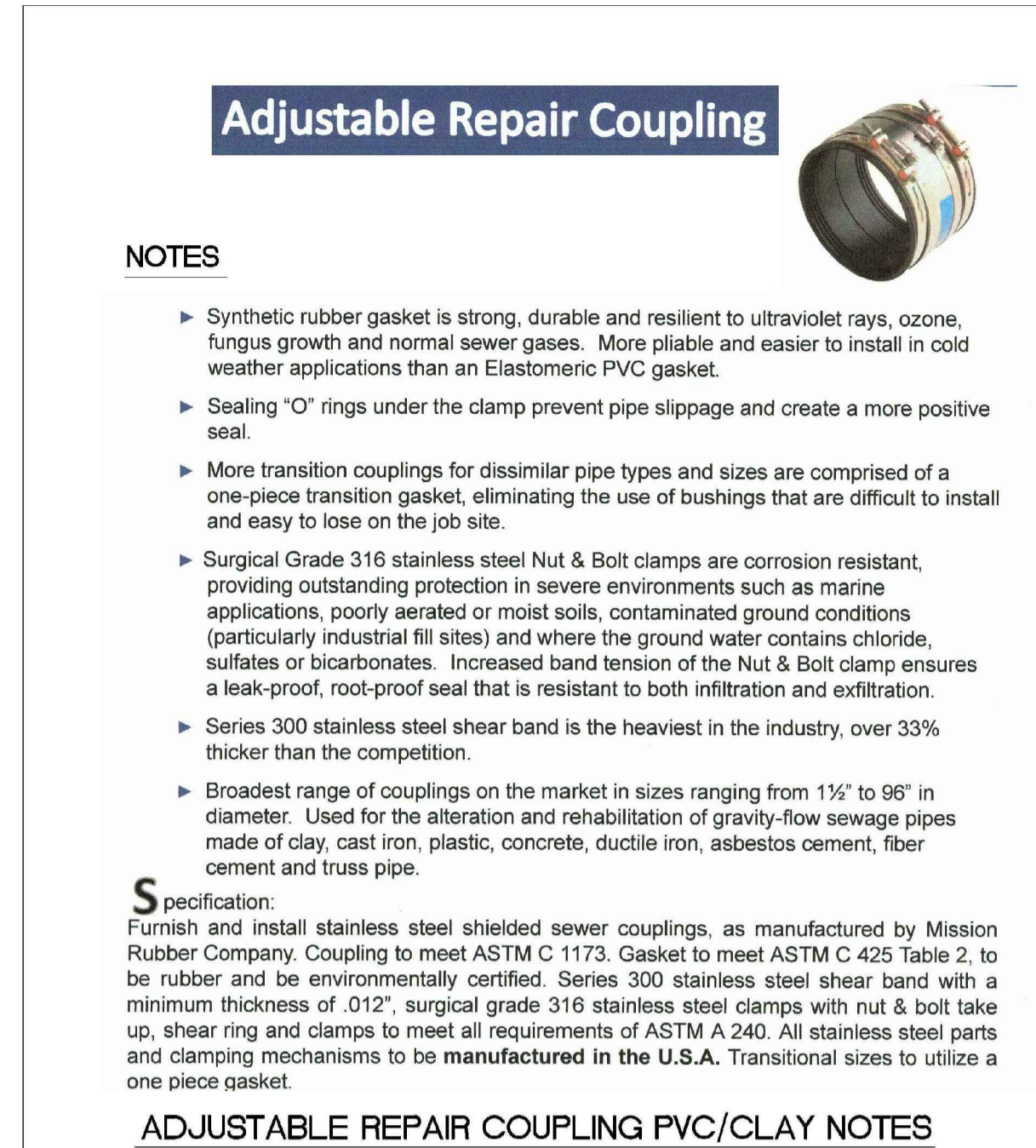
ENGINEERING STANDARDS 2022		
REVISIONS	ENGINEERING DIVISION	SERVICE LATERALS
BY DATE	CITY OF POMPAÑO BEACH	
T.W. 11/20/22		
S.S. 07/27/22		
S.S. 07/10/22		
S.S. 02/10/16	SCALE: N.T.S.	DATE: JUNE 2022 DWG. NO. 200-2



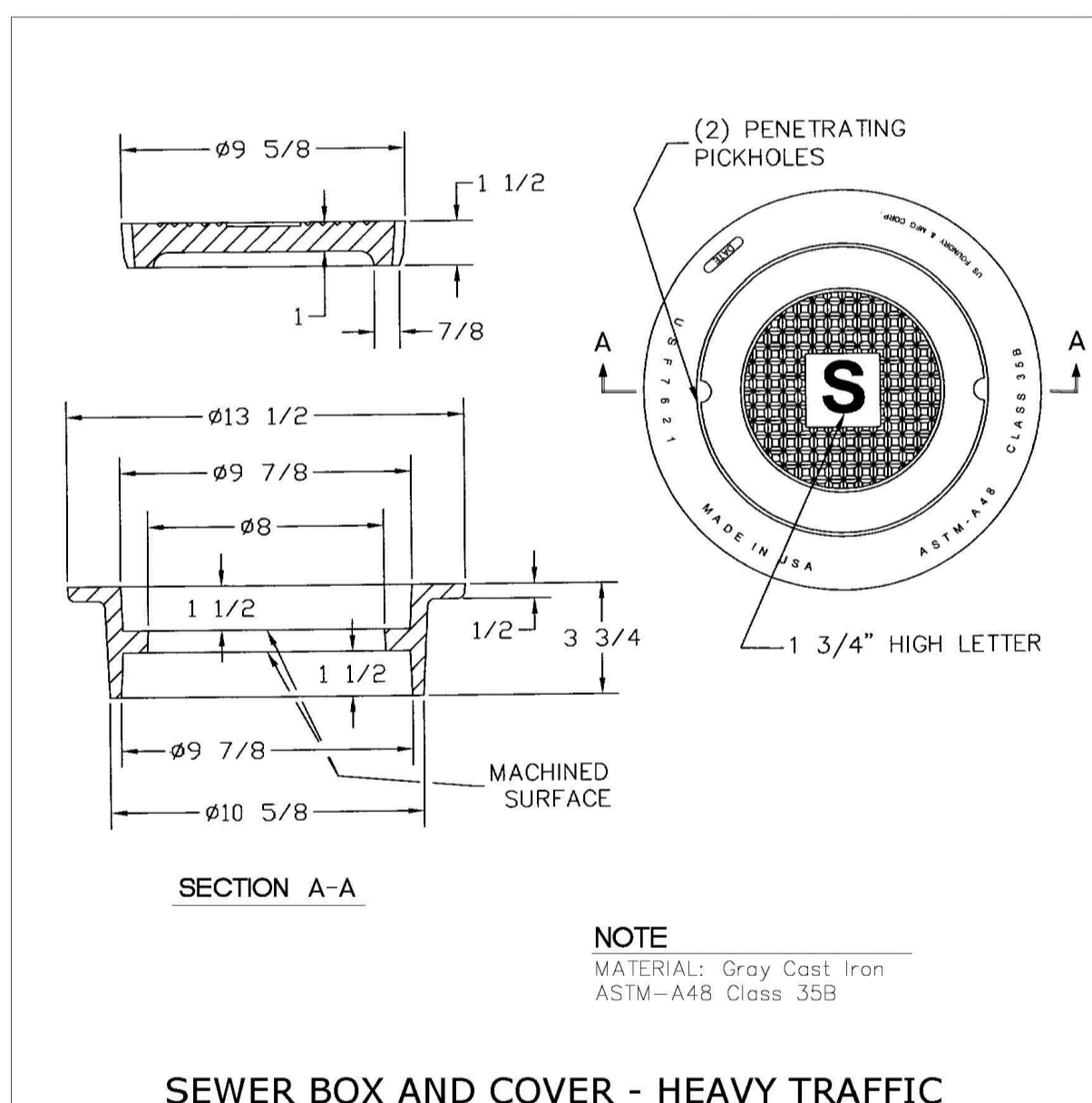
ENGINEERING STANDARDS 2022		
REVISIONS	ENGINEERING DIVISION	TEE GRAVITY SEWER SADDLE
BY DATE	CITY OF POMPAÑO BEACH	
T.W. 11/23/16		
S.S. 07/10/22		
S.S. 02/10/16	SCALE: N.T.S.	DATE: MAY 2022 DWG. NO. 201-1



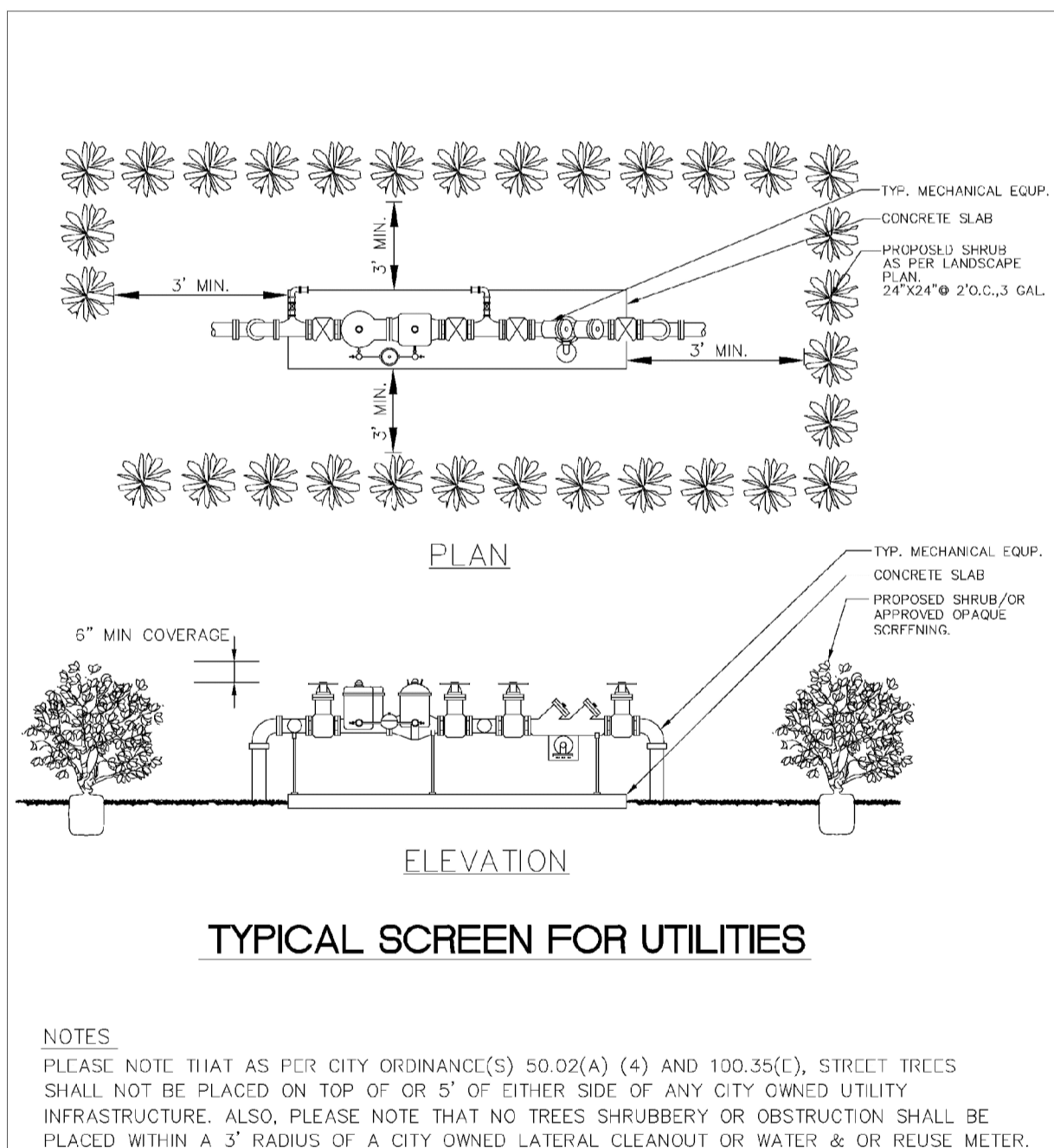
ENGINEERING STANDARDS 2022		
REVISIONS	ENGINEERING DIVISION	WYE GRAVITY SEWER SADDLE
BY DATE	CITY OF POMPAÑO BEACH	
T.W. 11/23/16		
S.S. 07/10/22		
S.S. 02/10/16	SCALE: N.T.S.	DATE: MAY 2022 DWG. NO. 201-2



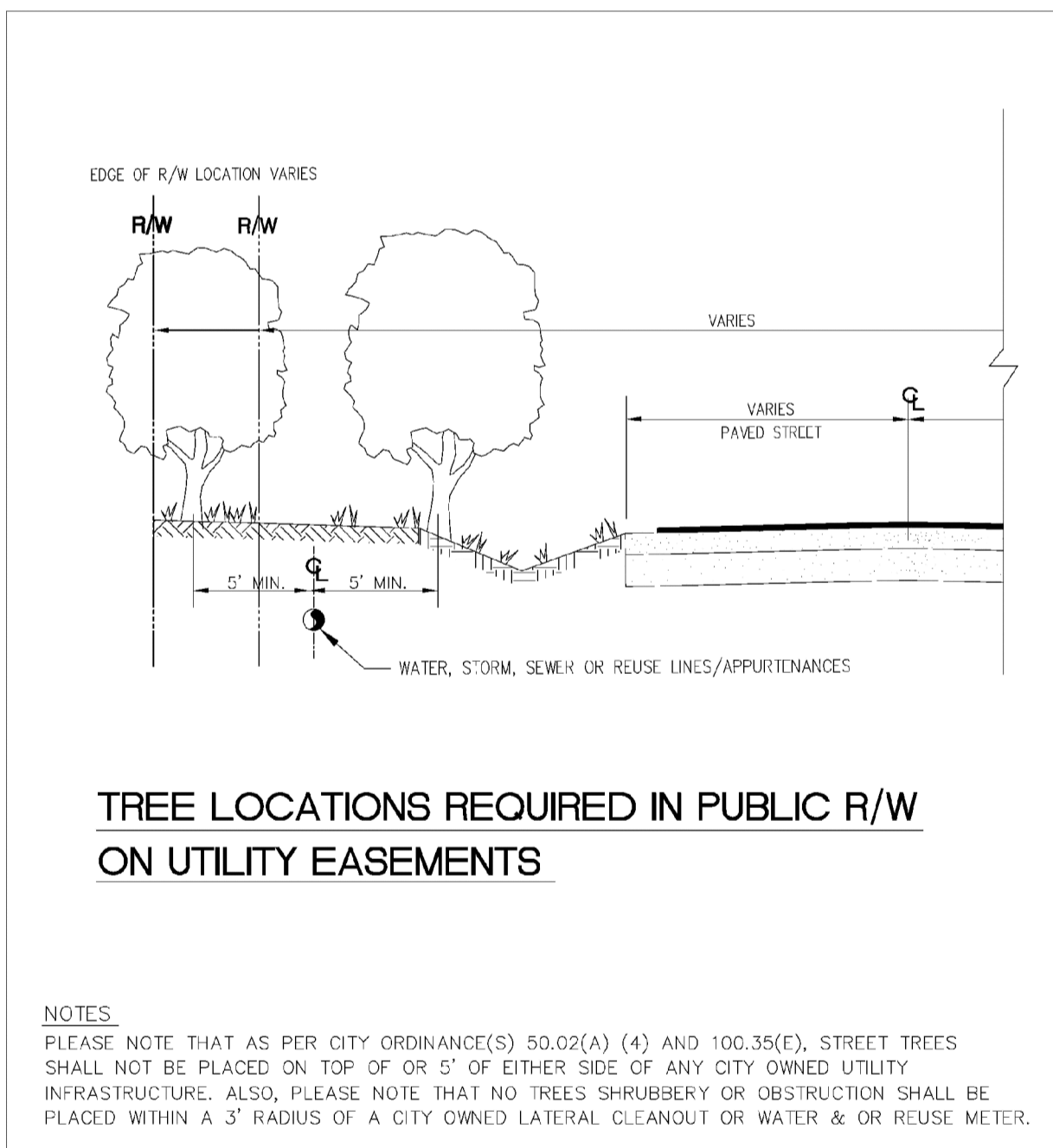
ENGINEERING STANDARDS 2022		
REVISIONS	ENGINEERING DIVISION	ADJUSTABLE REPAIR COUPLING
BY DATE	CITY OF POMPAÑO BEACH	
T.W. 11/23/16		
S.S. 07/10/22		
S.S. 02/10/16	SCALE: N.T.S.	DATE: MAY 2022 DWG. NO. 202-1



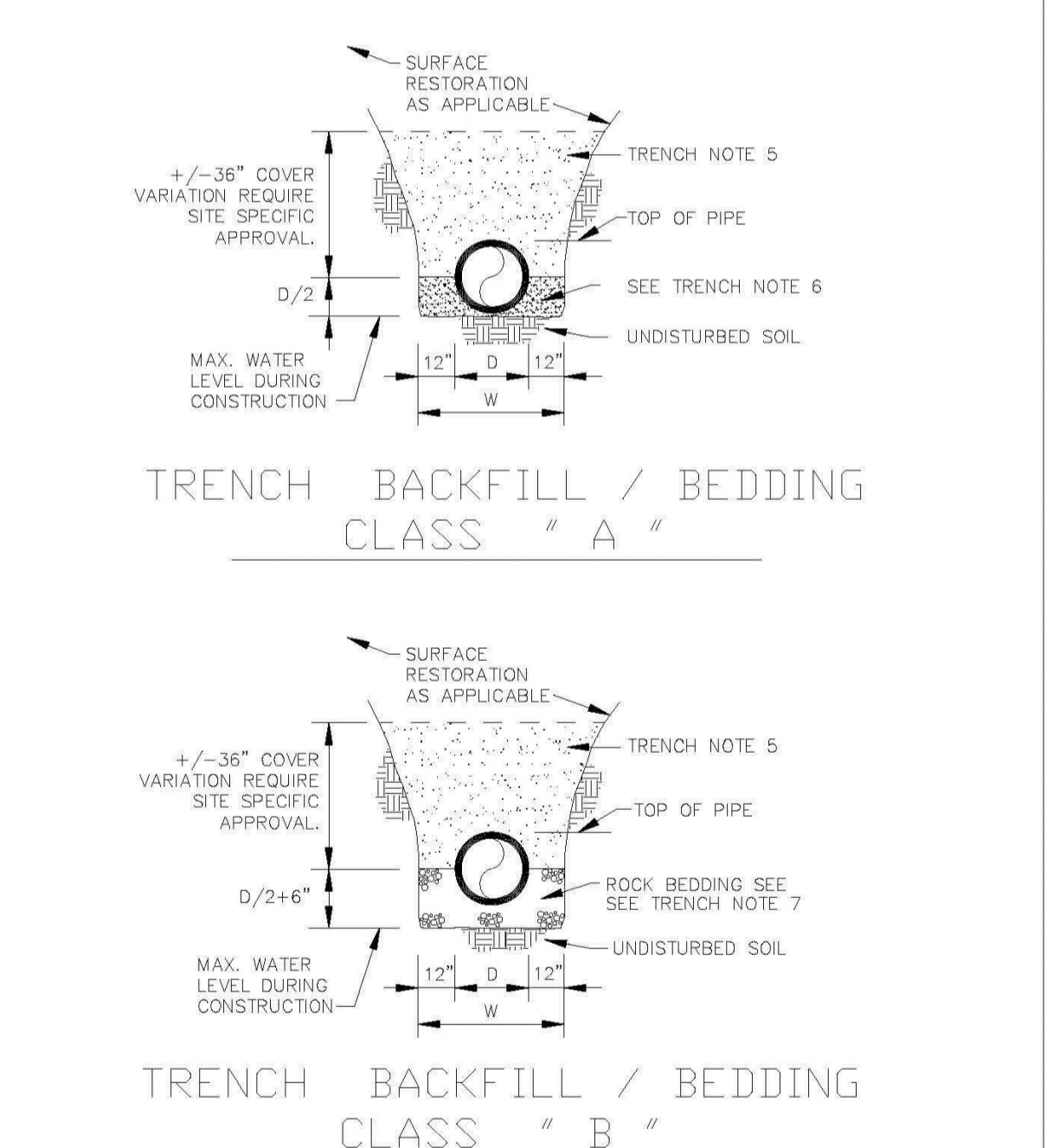
ENGINEERING STANDARDS 2022		
REVISIONS	ENGINEERING DIVISION	SEWER BOX AND COVER HEAVY TRAFFIC
BY DATE	CITY OF POMPAÑO BEACH	
T.W. 12/06/18		
S.S. 07/10/22		
S.S. 02/10/16	SCALE: N.T.S.	DATE: JUNE 2022 DWG. NO. 210-3



ENGINEERING STANDARDS 2022		
REVISIONS	ENGINEERING DIVISION	TYPICAL SCREEN FOR UTILITIES
BY DATE	CITY OF POMPAÑO BEACH	
T.W. APRIL 2010		
S.S. 07/10/22		
S.S. 02/10/16	SCALE: N.T.S.	DATE: MAY 2022 DWG. NO. 315-1



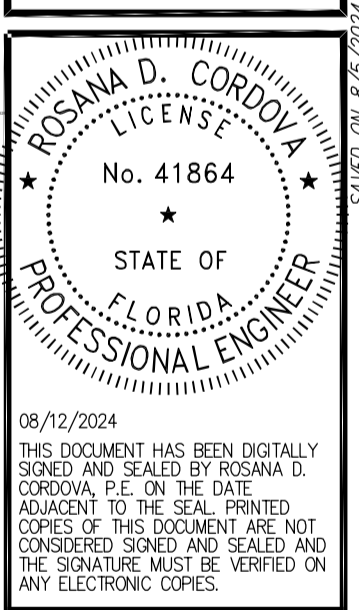
ENGINEERING STANDARDS 2022		
REVISIONS	ENGINEERING DIVISION	REQUIRED TREE LOCATIONS
BY DATE	CITY OF POMPAÑO BEACH	
T.W. 11/23/16		
S.S. 07/10/22		
S.S. 02/10/16	SCALE: N.T.S.	DATE: MAY 2022 DWG. NO. 316-1



ENGINEERING STANDARDS 2022		
REVISIONS	ENGINEERING DIVISION	TRENCH BACKFILL / BEDDING
BY DATE	CITY OF POMPAÑO BEACH	
T.W. 11/23/16		
S.S. 07/10/22		
S.S. 02/10/16	SCALE: N.T.S.	DATE: MAY 2022 DWG. NO. 504-1

FOR REVIEW ONLY		DATE
NO.	REVISION	
1		
2		
3		
4		
5		
6		
7		
8		
9		
10		

FIBERBUILT UMBRELLA
2201 WEST ATLANTIC BOULEVARD, POMPAÑO BEACH, FL, 33069
FOR: FIBERBUILT UMBRELLA



06/12/2024
THIS DOCUMENT HAS BEEN DIGITALLY
SIGNED AND SEALED BY ROSANA D.
CORDOVA, P.E. ON THE DATE
ADJUDICATED TO THE SEAL. PRINTED
COPIES OF THIS DOCUMENT ARE NOT
CONSIDERED SIGNED AND SEALED AND
THE SIGNATURE MUST BE VERIFIED ON
ANY ELECTRONIC COPIES.

RODRIGUEZ & ASSOCIATES, INC.
ENGINEERS - PLANNERS
AUTHORIZATION No. 8459
CORDOVA RODRIGUEZ
& ASSOCIATES, INC.
6941 SW 10TH AVENUE, SUITE 205
POMPAÑO BEACH, FLORIDA 33062
TEL: (954) 880-0180
FAX: (954) 880-0188
WWW.CRDENGINEERING.COM

DESIGN: OG	CHECKED: RDC
SCALE:	AS NOTED
DATE:	07/30/2024
PROJECT NO.	23.236-01
SHT	10 OF 13
DWG NO.	C332